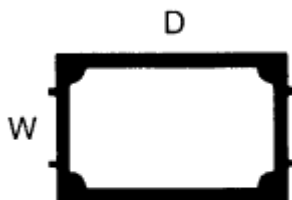
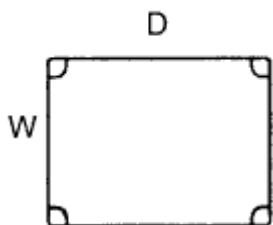
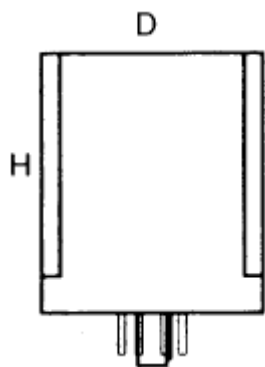


Housings for DIN OMEGA rail, with direct fixing or trough OCTAL / UNDECAL sochet. The pcb's are vertically fitted and the civer can be blind or with moulded terminal strip . This series offers a wide choice of dimensions and of custom drilling on any side.

ABS Housing with aluminium front panel.



| COD | H | W | D | Pin | COLOR |
|------|-----|----|----|-----|-------|
| CB08 | 70 | 46 | 75 | 8 | Black |
| CA08 | 100 | 46 | 75 | 8 | Black |
| CB11 | 70 | 46 | 75 | 11 | Black |
| CA11 | 100 | 46 | 75 | 11 | Black |



| COD | H | W | D | Pin | COLOR |
|---------|----|----|----|-----|--------------|
| CZ8L | 83 | 45 | 61 | 8 | Grey |
| CZ11L | 83 | 45 | 61 | 11 | Grey |
| *CZ8GS | 88 | 45 | 61 | 8 | Grey |
| *CZ11GS | 88 | 45 | 61 | 11 | Grey |
| CU11B | 71 | 46 | 61 | 11 | Beige |
| *CM8GS | 55 | 47 | 71 | 8 | Black |
| *CM11GS | 55 | 47 | 71 | 11 | Black |
| *CG8GS | 71 | 37 | 75 | 8 | Grey |
| *CG11GS | 71 | 37 | 75 | 11 | Grey |

*GS= Guide for PC Board

[Print](#)

[Close](#)